

# General Election Priorities Burton and Uttoxeter

**1221**

Number of  
Staffordshire  
Wildlife Trust  
members in this  
constituency

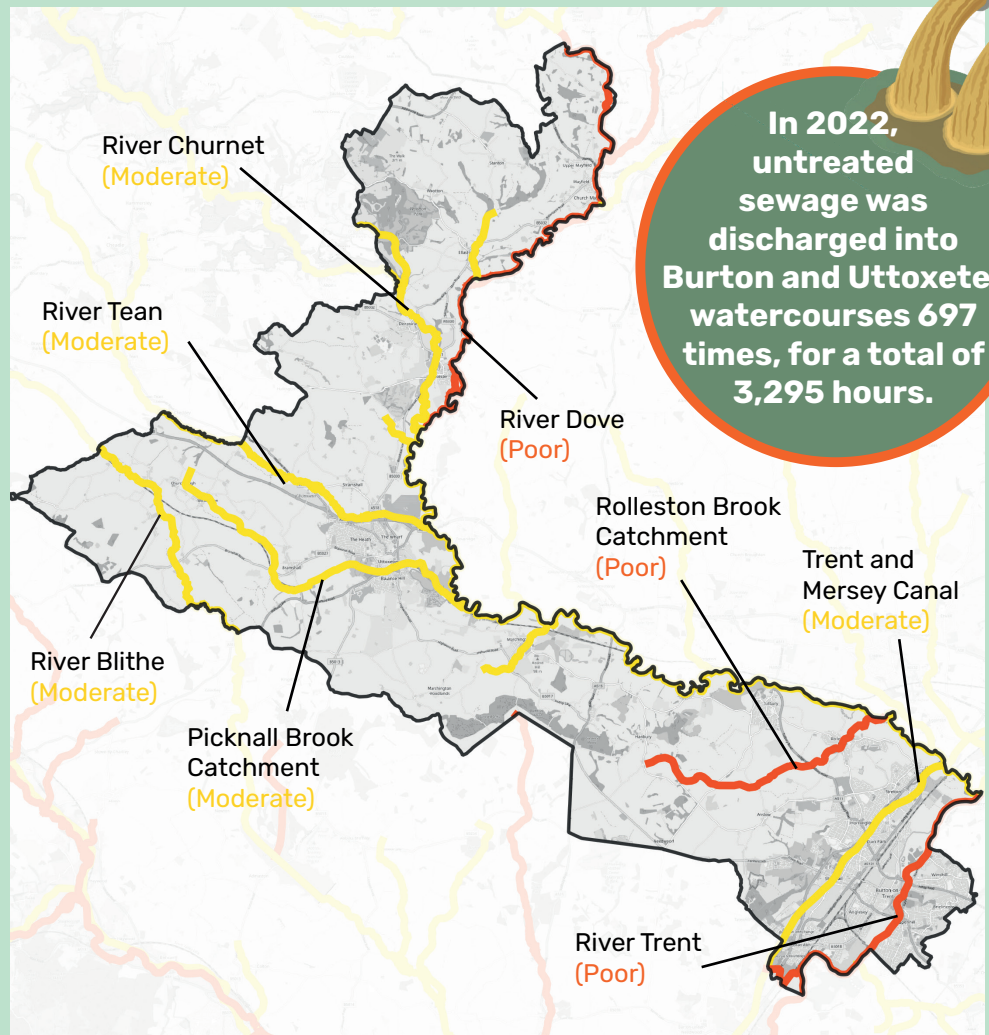
## Priority 1: Clean up and restore Burton and Uttoxeter's rivers and streams

**Every watercourse in this constituency is failing to meet legally-binding environmental standards under the Water Framework Directive.**

The stretches of the River Trent and River Dove within the constituency are classified as being in poor ecological health.

Sewage discharges, agricultural runoff and pollution from industry, development and transport are the leading causes of poor water quality in the constituency.

Flood risk is high in areas of Burton, Uttoxeter, Marchington and Rolleston-on-Dove. Staffordshire Wildlife Trust has carried out river restoration projects at Burton Washlands, Marchington, Tucklesholme and Cherry Holme. These schemes have helped reduce flood risk by restoring floodplain functionality, slowing the flow and providing floodwater storage. Additional benefits include water quality improvements and better habitats for wildlife.



Overall water quality status of watercourses in Burton and Uttoxeter: latest figures from the Environment Agency (Water Framework Directive)

## What must be done by Government to clean up our rivers

**1** Cut nutrient pollution from farming, sewage and development in half by 2030, with proper funding for enforcement agencies to effectively monitor our watercourses and enforce penalties on polluters.

**2** Invest in creating and repairing wild habitats to provide a natural solution to flooding, which will protect people's homes and businesses, and improve water quality.

**3** Support the reintroduction of beavers living in wild to restore our rivers and wetlands.



# General Election Priorities

## Burton and Uttoxeter

### Priority 2: Bring back Burton and Uttoxeter's lost wildlife

Across the UK, the abundance of wild species has fallen by an average of 19% since 1970\*.

Priority species, which have been prioritised for conservation for reasons such as rapid population decline, have declined to 37% of their baseline value in 1970.

Similar wildlife declines are being seen across Burton and Uttoxeter.

Over the last two decades, the number of water voles recorded in the constituency has fallen by 85%, while records of bullfinch have declined by 58%.

These devastating declines are caused by a number of factors including habitat loss, climate change, pollution, urbanisation and changes to the way we manage our agricultural land.

\*State of Nature report 2023



To halt and reverse the collapse of our natural world, we need the Government to put nature into recovery by protecting and restoring **at least 30%** of land and water for nature by 2030.

1.6%

The percentage of land managed for wildlife in Burton and Uttoxeter<sup>1</sup>

### What must be done by Government

- 1 Increase the budget for nature-friendly farming, so farms can be both productive and bursting with wildlife
- 2 Prevent further loss of habitat by ensuring new development both protects and enhances nature.
- 3 Fund the restoration and creation of more, bigger and better natural habitats, to help wildlife recover and protect communities from the impacts of climate change.

1. Figure includes SSSIs, LNRs, nature reserves, Local Wildlife Sites (LWS) overlapping agri-environment schemes. Figure is 12.4% if LWS, SBIs, National Parks, AONBs and agri-environment schemes that don't overlap LWS are included

### Priority 3: Let nature help

Spending time in nature boosts physical and mental health – but not everyone has a nature-rich greenspace within walking distance of their home.

The constituency currently does not meet the minimum standard of green space provision of 2.4ha of accessible greenspace per 1,000 people.

12,989 people living within in the East Staffordshire local authority area don't have a park or local greenspace within a 10 minute walk<sup>2</sup>

### What must be done by Government

- 1 Support the creation of more good quality greenspace in neighbourhoods, and provide routes for people to access existing wild spaces, particularly for the communities that have the least provision today.
- 2 Fund and integrate green prescribing into community-based health services.
- 3 Ensure all children enjoy regular outdoor learning opportunities at school.

### Vote for Nature Survey results<sup>3</sup>

100% of survey respondents from the Burton and Uttoxeter constituency said strong policies to tackle the nature and climate crisis are important to them when it comes to voting at the next General Election.

The biggest environmental concerns for respondents from the constituency are 'polluted rivers' closely followed by 'losing wild places to development'.

3: Staffordshire Wildlife Trust's Vote for Nature Survey, Nov '23 - June '24